

FSC-TPC

Fire stop barrier for plastic and/or corrugated pipes with cables.

Protection designed to be built into the wall after pipes have been installed. Can be installed in locations where the construction support is damaged and there is an annular space around the services. It is possible to protect mixed corrugated plastic pipes in the same crossing.

- For PE/PP, PVC, Abs pipes containing electrical cables or other services.
- Pipes can be grouped and protected in bundles.

PRODUCT / Item		For pipes with Ø (mm)
FSC-TPC 050	FSC-TPC-050	50
FSC-TPC 060	FSC-TPC-060	60
FSC-TPC 090	FSC-TPC-090	90
FSC-TPC 120	FSC-TPC-120	125

INSTALLATION

Clean the pipe. Open the sleeve longitudinally, place it around the pipe and clamp it on it using special metal tabs. Push the collar towards the centre of the wall.

Fix with FSS putty in the event of installation on a special crossover pipe.

Contact Raytech regarding through openings or installation on inclined piping.



APPROVAL

Class EI 120

Non toxic and asbestos free.

Does not emit toxic gases and dense fumes. In compliance with standard EN 1366-3.

FSM

Fire stop barriers in incombustible plaster.

Protective coating to seal and prevent fire propagation in wall cavities; it can be applied manually or sprayed. It can be easily mixed in big quantities with suitable mixer (e.g. concrete mixer).

- Made from mineral fibres.
- Simply mix with water and with or without cement mixes.
- For gates on walls or slabs.

PRODUCT / Item	Package
FSM 20 FSM-20	20 kg bag

INSTALLATION

After the edges of the openings have been finished and cleaned, the incombustible plaster is mixed with water, then applied manually, with a trowel or a pump, and left to dry in air. Water quantity: about 0,85 lt/kg (volume 1 kg = about 2,5 dm³).

For other applications please contact Raytech.



APPROVAL

Class EI 120

Non toxic and asbestos free.

Does not emit toxic gases and dense fumes. In compliance with standard EN 1366-3.

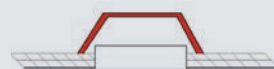
FSCP

Fire stop barriers for ceiling lights.

Fireproof barriers for fluorescent lights in suspended ceilings. Maintains conditions of fire resistance of ceilings and suspended ceilings. Slightly reduces the temperature in the space between the ceiling and the ceiling panel.

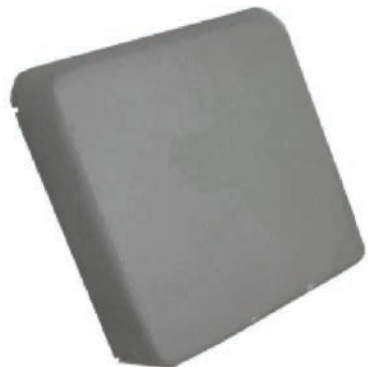
- Made from non-toxic mineral fibres.
- Prevents propagation.
- Flexible, light and self-supporting, easy to install and to remove.

PRODUCT / Item	Dimension (mm)	Weight (kg)
FSCP 600 FSCP-600	720 x 750 x 150	1,7 circa
FSCP 1200 FSCP-1200	1330 x 720 x 140	3,5 circa



INSTALLATION

No special care is required. The protection must be placed on the ceiling light grid adhering to the panel.



APPROVAL

Class EI 120

Non toxic and in compliance with standard EN 1365-2 • 1363-1.