

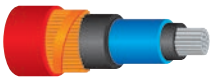


Electrical performance:

CEI 20-24 • CEI 20-62/1 • HD 629-1

RANGES OF APPLICATION

For single core cables type:



**Extruded cable
copper wire screened**



**Extruded cable
copper tape screened**

TEMPERATURES



105°C

Working temperature



140°C

Max overload temperature



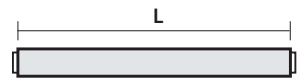
300°C

Short circuit temperature

SINGLE CORE COLD-SHRINK JOINTS

Monoblock joints for extruded cables up to **18/30 kV (Um 36 kV)**.

Suitable for outdoor, underground and even underwater applications. Very compact and complete with all components. Each kit contains 1 single core joint. Each joint component is pre-dilated on a spiral support and is extremely easy to remove for fast, safe installation without the use of any tools or heating.



For cables

(A)RG16HIR12 and (A)RG7HIR insulation thickness FULL

Product	Item	U _{max} (kV)	∅ on insulation (mm)	∅ on external sheath (mm)	Conductor cross section (mm ²)	L (mm)
JMAUTO 20/95-1	JM-2095-1-AUTO	12	17 - 23	26 - 33	70 - 150	550
JMAUTO 20/240-1	JM-20240-1-AUTO		22 - 32	33 - 42	185 - 400	600
JMAUTO 20/400-1	JM-20400-1-AUTO		32 - 36	42 - 48	400 - 630	600
JMAUTO 20/95-1	JM-2095-1-AUTO	17,5	17 - 23	26 - 33	50 - 150	550
JMAUTO 20/240-1	JM-20240-1-AUTO		22 - 32	33 - 42	150 - 300	600
JMAUTO 20/400-1	JM-20400-1-AUTO		32 - 36	42 - 48	400 - 500	600
JMAUTO 20/95-1	JM-2095-1-AUTO	24	17 - 23	26 - 33	25 - 95	550
JMAUTO 20/240-1	JM-20240-1-AUTO		22 - 32	33 - 42	120 - 240	600
JMAUTO 20/400-1	JM-20400-1-AUTO		32 - 36	42 - 48	300 - 400	600
JMAUTO 30/95-1	JMAUTO 30/95-1	36	25 - 29	31,2 - 38,3	50 - 95	750
JMAUTO 30/185-1	JMAUTO 30/185-1		27 - 31	33,4 - 42	120 - 185	750

For cables RG7HIM1 insulation thickness LOW

Product	Item	U _{max} (kV)	∅ on insulation (mm)	∅ on external sheath (mm)	Conductor cross section (mm ²)	L (mm)
JMAUTO 20/95-1	JM-2095-1-AUTO	24	17 - 23	26 - 33	25 - 120	550
JMAUTO 20/240-1	JM-20240-1-AUTO		22 - 32	33 - 42	120 - 300	600
JMAUTO 20/400-1	JM-20400-1-AUTO		32 - 36	42 - 48	300 - 500	600

★ ADVANTAGES

- Rapid installation for lower labour cost
- Highly reliable and safe for operators
- Installing without heating and without tools
- Reduced size of the joint and joint bay dimensions
- Minimized possibility of error

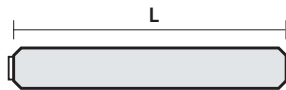


For cables CPR RG26H1M16 12/20 kV (U_{max} 24 kV)

Product Item	Nominal voltage U _{max} (kV)	Ø on insulation (mm)	Ø on external sheath (mm)	Conductor cross section (mm ²)	L (mm)
JMAUTO 20/95-1 JM-2095-1-AUTO	24	17	26	25	550
		17	27	35	
		18	28	50	
		19	29	70	
		20,6	30	95	
JMAUTO 20/240-1 JM-20240-1-AUTO	24	22	32	120	600
		23,7	34	10	
		25	36	185	
JMAUTO 20/400-1 JM-20400-1-AUTO	24	27,8	39	240	600
		30,8	43	300	



Single core cold-shrink joints (U_{max} 24 kV)



For cables CPR RG26H1M16 18/30 kV (U_{max} 36 kV)

Product Item	Nominal voltage U _{max} (kV)	Ø on insulation (mm)	Ø on external sheath (mm)	Conductor cross section (mm ²)	L (mm)
JMAUTO 30 / 95-1 JMAUTO 30/95-1	36	25,6	32	35	750
		25	35	50	
		25	36	70	
		26	37	95	
JMAUTO 30 / 185-1 JMAUTO 30/185-1	36	27	38	120	750
		28,5	39	150	
		29,5	41	185	

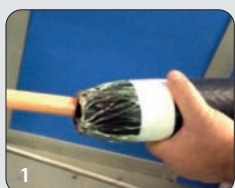


Single core cold-shrink singleblock joints (U_{max} 36 kV)

The accessories for cables in accordance with CPR, type RG26H1M16 (Italian designation), are suitable for

- Cables with copper conductors
- Special thermoplastic sheath
- Red copper wire screen
- High modulus rubber insulation

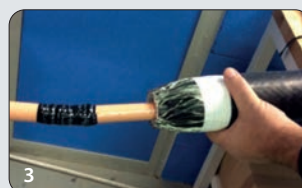
Installation sequence



1 The body of the joint carries the integrated shield and outer sheath.



2 The joint is fitted on the connected cable.



3 Position at the centre of the connection and collapsed on the cable removing the inner support.



4 The joint is completed and can be used immediately.